

KILN & LODGE

ESTATE AGENTS : REDEFINED



1 Fordson Road

, Chelmsford, CM2 5PJ

Offers in the region of £375,000



3



2



2



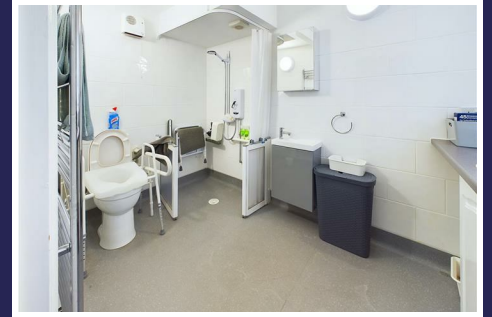
D



1 Fordson Road

, Chelmsford, CM2 5PJ

Offers in the region of £375,000



ACCOMMODATION

GROUND FLOOR

Entrance Hall

Lounge

21'7" > 15'8" x 12'5" (6.6m > 4.8m x 3.8m)

Kitchen

15'5" x 6'6" (4.7m x 2m)

Dining Room

12'1" x 10'9" (3.7m x 3.3m)

Utility/Shower Room

FIRST FLOOR

Bedroom One

11'5" x 11'1" (3.5m x 3.4m)

Bedroom Two

11'5" x 10'2" (3.5m x 3.1m)

Bedroom Three

8'2" x 8'2" (2.5m x 2.5m)

Bathroom

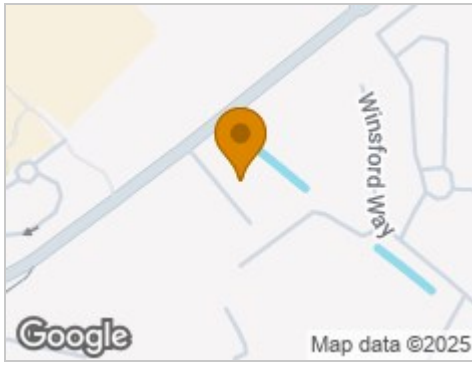
Exterior

Rear Garden

Frontage



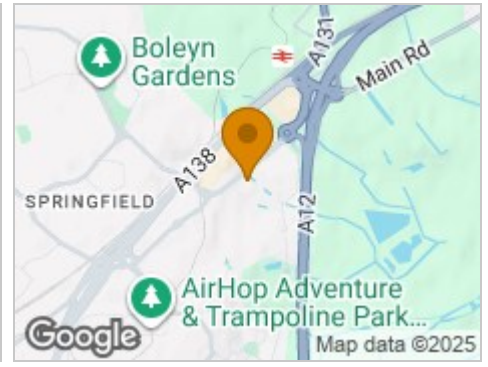
Road Map



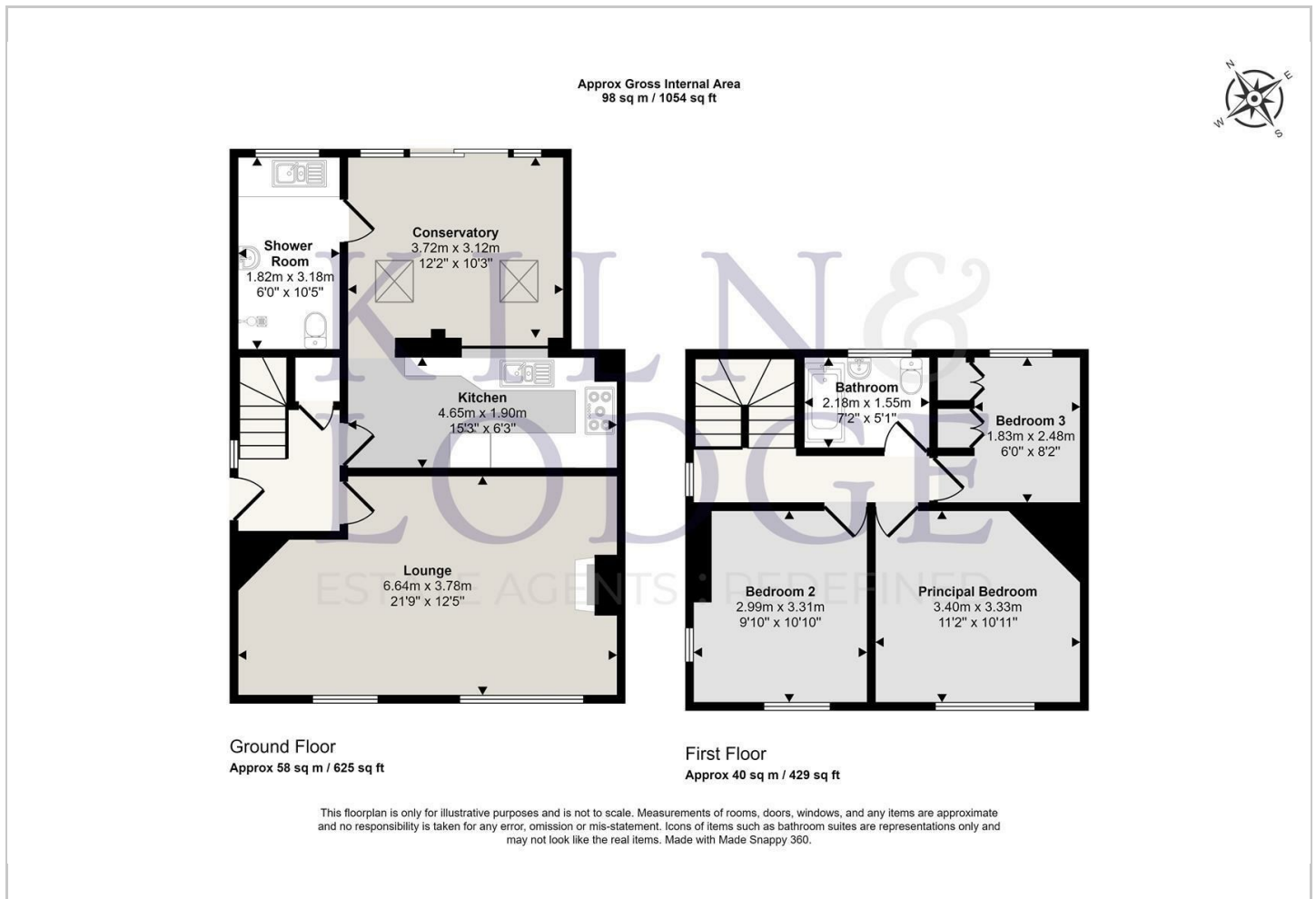
Hybrid Map



Terrain Map



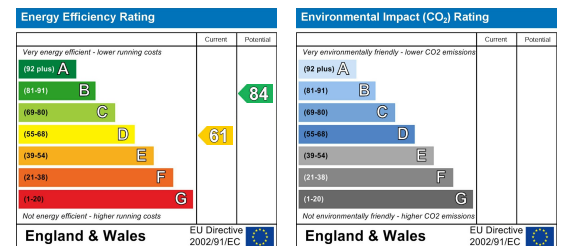
Floor Plan



Viewing

Please contact our Chelmsford Office on 01245 330764 if you wish to arrange a viewing appointment for this property or require further information.

Energy Efficiency Graph



These particulars, whilst believed to be accurate are set out as a general outline only for guidance and do not constitute any part of an offer or contract. Intending purchasers should not rely on them as statements of representation of fact, but must satisfy themselves by inspection or otherwise as to their accuracy. No person in this firm's employment has the authority to make or give any representation or warranty in respect of the property.